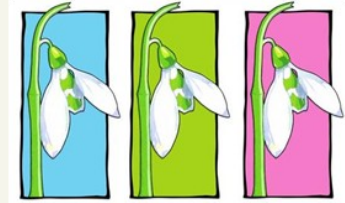




# The Olive Branch

faith in action

## Spring 2015



### Meat needed!

Provision of emergency food has steadily increased, but we have a need for meat based items e.g. tins of Corned beef, stew, meat balls etc. Can you help?

### Website Design

What would you like to see?

We are discussing updating our website and would like to know what you think.

Do you find it easy to access information, or if you are a donor, how easy do you find it to complete this process on the site. We would appreciate your comments. Please contact Kath on 01524 555715.

### THE STORY SO FAR

The Olive Branch began in 2004 serving a weekly meal to disadvantaged and homeless people in Lancaster. 2300 free meals were served in a 4 year period.

We became a registered charity in 2006 and to broaden the ministry and meet additional needs we opened a support centre in Dec. 2008 at Thurnham St, Lancaster.

We recognized that there was much more that needed

Our desire is to see lives changed in a practical way and to show the love of God to all those who seek our help regardless of any other life characteristic or circumstance. We have a very faithful band of volunteers who all bring their own skills and life experiences to support our visitors and to encourage and enable them to alleviate their difficulties. It is an immense privilege to share with others in their problems and especially fulfilling

when we are able to help. We try to help in any way we can both practically and spiritually. Please see over for further details of how we do this...  
to be done and our board of trustees decided that in August 2011 we should move to our current, slightly larger and more accessible premises on Westbourne Rd, near the railway station.



Our premises at Westbourne Rd

And so... The story continues.. please see over

## Statistics

**Last year 2014** we had **2402** individual enquiries; disadvantaged people who needed additional help and support!

Several of these were families who needed help with food and **1581** adults and **543** children were given emergency food.

Many people come into the Olive Branch because they are lonely as well as needing help with other areas of life. Many need access to a phone or computer as well as



advice on how to manage their money better. It is very difficult for many

who have been on benefits for long periods to cope with the incidentals of life and those challenging circumstances' that happen for each one of us. Living on benefits does not enable people to save "for a rainy day" so when extraordinary life events happen they can be disastrous and it's a wonderful experience to be able to give them **hope!!**

*Psalm 33:20 We wait in hope for the LORD; he is our help and our shield.*



*Since the beginning the Olive Branch has helped 1401 different people*

*Please pray for The Olive Branch, that our Trustees will hear what God is saying as they prepare and plan for the future.*

*Please pray for the resources (volunteers, monetary provision and food stocks etc.)*

*Deuteronomy 11:14 then I will send rain on your land in its season, both autumn and spring rains, so that you may gather in your grain, new wine and olive oil.*

*Since the beginning the Olive Branch has had 8198 different visits*

### What do we do?

**FOOD BANK:** We provide free emergency food to families and individuals in difficulty, referred by an agency.

**MONEY ADVICE:** Using the Christians Against Poverty (CAP) Money Course, we hold personal or group training sessions on Budgeting and money management.

**RESPONSIVE MENTORING:** We offer practical support and encouragement to those committed to being free of addiction. This includes arranging introductions to other specialist organisations and rehab centres.

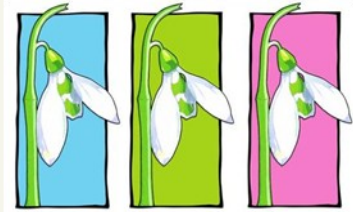
**HOMELESSNESS SUPPORT:** We are sometimes able to provide tents and sleeping bags for "rough sleepers" and operate a referral system, to help families and individuals access housing advice and accommodation and/or to help with any underlying issues.



## CHURCH INFORMATION TALKS

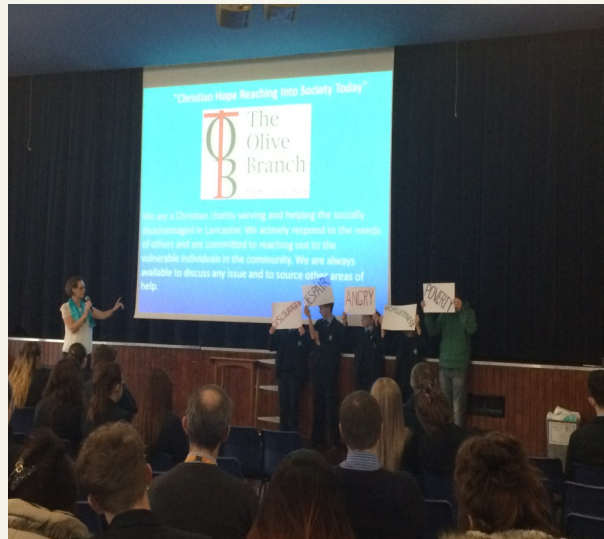


Would you like a speaker to come to your church or mid week group? If so, please ring Kath on 01524 555715. Our volunteers come from many different churches and it is helpful to be able to chat with those who show interest in knowing more about available volunteering opportunities.



## SCHOOL PRESENTATIONS

This year we have spoken to many children in various schools in the district, one of which was a week conducting assemblies along with Year 9 pupils at Our Ladies Catholic College. They were considering how people in the community suffer and what they could do to help those in need. They collected a considerable amount of food which was brilliant. Thank you to all the pupils and staff!



**Many thanks OLCC!!!**

## FUNDRAISING EVENTS

It's a measure of the success of our fundraiser and the loyalty of our supporters that the Olive Branch has continued to do so well when many other charities have been struggling. We have kept abreast with the provision of Funds and food

supplies etc. The people who come to the Olive Branch have such diverse needs and sometimes we are asked to help in very different ways and it depends on our limited resources as to whether we are able to help them at the

time! Part of our funds are used for such compassionate purposes. **Can you do a sponsored event** or donate the cost of a luxury item that would help us to respond to a request for a compassionate need!!

**Can you do a sponsored event, call us with your ideas!**

### Why I volunteer

I came into the Olive Branch because I wanted an opportunity to reach out to and love other people the same way Jesus loved me. I realize how blessed I am and I wanted to serve and give back to other people the best I could. I have enjoyed my time here and I am so glad to be a part of the ministry. @ Student Volunteer

[www.the-olivebranch.org.uk](http://www.the-olivebranch.org.uk)

The Olive Branch   
faith in action

1 Westbourne Rd  
Lancaster  
Lancashire  
LA1 5DB

Phone: 01524 555715  
Mobile: 07572577426

Email:  
[tob.olivebranch@live.co.uk](mailto:tob.olivebranch@live.co.uk)



Ask us for a collection bin if you would like to collect food for disadvantaged people in Lancaster

## Christ Reaching Into Society Today

I've walked all the way from Morecambe, I'm glad you're here!

It's good that I can come here for food otherwise I would be shoplifting and that's not right is it?

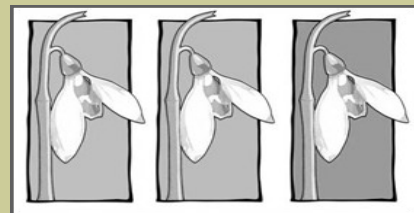
Thank you for all your kindness, I don't know what we would do without people like you!

You don't judge me

The Olive Branch is my social life in a very lonely world!

You give me food for my soul and not just for my body!

The Olive Branch is my only sanctuary!



*Psalm 84:5-7 Blessed are those whose strength is in you, whose hearts are set on pilgrimage. As they pass through the Valley of Baca, they make it a place of springs; the autumn rains also cover it with pools. They go from strength to strength, till each appears before God in Zion.*